



MARYLAND ENVIRONMENTAL SERVICE AGENCY HISTORY



WWW.MENV.COM

MARYLAND ENVIRONMENTAL SERVICE

AGENCY HISTORY



In the mid-1960s, faced with pollution from small, poorly-maintained wastewater facilities, and sewage treatment plants, environmental officials conceived the idea for a state-wide service agency. The agency would be responsible for siting, management, and operations of regional facilities which would improve State waters.

GOV. MANDEL SIGNS CHAPTER 240, 1970 ACTS OF THE GENERAL ASSEMBLY, CREATING MARYLAND ENVIRONMENTAL SERVICE (MES).

1970



- MES begins as an agency within the Maryland Department of Natural Resources (DNR), funded through traditional State appropriations. Twenty-one employees to start, with funding of \$413,000.
- DNR Secretary J. Millard Tawes names Thomas D. McKewen as MES' first Director. (Pictured)
- Safeguards are written into the bill to alleviate concerns that MES will usurp local government functions.

1971

- The State directs MES to take over responsibility for the operation of 30 state-owned water supply and wastewater treatment plants, which increases MES' number of employees to 38.

1972

- MES undertakes a joint sewer and wastewater project with the Carroll County Sanitary District. MES designs and constructs the Freedom District Wastewater Treatment Plant, and the Sanitary District constructs and operates the collection system. This facility will treat the wastewater from Springfield State Hospital, Central Laundry (a minimum-security prison), and the Town of Sykesville, which had failing septic tanks polluting the South Branch of the Patapsco River.
- The Maryland General Assembly establishes a Solid Waste Reclamation Loan fund of \$10 million, giving MES responsibility for the research and development of refuse handling and recycling facilities using new waste management technology. In 1974, \$5 million is added to the fund.
- As part of its research and development mission and in cooperation with scientists at the U.S. Department of Agriculture (USDA), MES uses money from the fund to begin sewage sludge composting experiments at the USDA's Beltsville Agriculture Research Center, spawning hundreds of projects around the world using the aerated static pile sludge composting technology.

1973

- For the first time, MES uses research and development funds to help finance a solid waste project. The Baltimore County Resource Recovery Facility (BCRRF), opened in 1974, uses a new technology that extracts ferrous metals from the solid waste stream for recycling. The new technology also produces Refuse Derived Fuel (RDF) from the refuse that is used as fuel at a Baltimore Gas and Electric Company power plant.

1975

- Construction of the Freedom District Wastewater Treatment Plant is complete, and the facility placed online.
- MES assists Washington Suburban Sanitary Commission (WSSC) and Washington DC by undertaking pilot projects to entrench wastewater sludge at multiple sites.

1976

- At the request of local officials, MES takes over the Joppatowne water and wastewater facilities from a private owner. MES undertakes significant improvements to the facilities. The facility is turned over to Harford County in 1984.
- MES begins operations for the Anne Arundel County Public Schools (AACPS) at Southern High School in Harwood.

1980

- The General Assembly creates the Northeast Maryland Waste Disposal Authority (NMWDA) to undertake a regional solid waste disposal project in Baltimore City. The Director of MES is named as an ex officio member of NMWDA.

1981

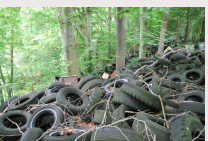


- MES opens the world's largest sludge composting operation, at Dickerson, in Montgomery County, creating and selling a product called ComPRO. The operation later moves to a site in Silver Spring and operations are transferred to the WSSC. WSSC hires MES to continue to market ComPRO, which becomes widely recognized all over the Mid-Atlantic area as an effective soil conditioner and organic fertilizer. (Pictured)

1983

- To prevent a complete loss of all hazardous waste disposal sites in Maryland, MES plans, designs, permits, constructs, and opens the first Resource Conservation and Recovery Act (RCRA) authorized hazardous waste disposal facility in the United States at Hawkins Point. The controversial site closes several years later due to insufficient amounts of waste being disposed at the site. MES continues monitoring of emptied hazardous waste Cell 40 and the Allied Signal (now Honeywell) Cell 5 used for previous disposal of chrome ore processing waste.

1984



- MES begins operating the 1,140-acre Hart-Miller Island (HMI) Dredged Material Containment Facility (DMCF) in Baltimore County under a contract with the Maryland Department of Transportation Maryland Port Administration (MDOT MPA). MES is hired, in part, to assuage opponents of the controversial HMI project. (Pictured)
- MES begins a working partnership with the Maryland Department of the Environment (MDE) to clean up illegal scrap tire sites in Maryland. MES' scope of work consists of education, site clean-ups, strategic planning, licensing, and scrap tire collection. The largest cleanup to date is the Garner/Brandywine Scrap Tire dump site. The Garner site contained more than a million tires covering over 15 acres of ravines. The first phase of the cleanup began in 2010. In 2012, after the removal of 1,132,000 tires, the Garner site is restored to pre-dump natural conditions, including restoration of non-tidal wetlands and native trees. In the ensuing years, MES cleans up 27 sites, removing a total of 3,415,300 tires. (Pictured)

1985



- MES begins billing State agencies for direct operating costs for certain projects rather than relying on direct State appropriations.
- MES begins operating the Montgomery County Yard Trim Composting Facility in Dickerson and marketing the leaf compost product. Four years later, MES begins operating a yard waste composting facility at the Prince George's County Organics Compost Facility. MES develops and trademarks the compost product from these two (2) facilities as Leafgro®. (Pictured)
- MES begins providing third party inspection services for sewage sludge land spreading operations for DC Water and WSSC.

1986

- MES begins wastewater treatment plant operations at the Calvert Cliffs Nuclear Power Plant in Calvert County.
-

1988

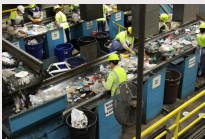


- MES begins operating the \$14 million, state-of-the-art Dorsey Run Advanced Wastewater Treatment Facility - the first plant MES operates with biological nutrient removal. (Pictured)
 - MES rejuvenates its used oil collection program, shut down when oil prices dropped in 1986. The program becomes the largest in the state with 190 used motor oil collection sites.
-

1989

- The Maryland General Assembly ceases direct appropriations to MES for operations.
 - After years of negotiations, MES moves forward to design, finance, and construct the Midshore Regional Landfill in Talbot County. Caroline, Queen Anne's and Talbot Counties execute waste disposal service agreements with MES in 1990 to allow for the issuance of MES revenue bonds to finance the project. The landfill opens in 1991. Kent County later joins the Midshore project.
 - MES begins operating its first energy project when the Department of Public Safety and Correctional Services (DPSCS) hires MES to operate its 4,000-kilowatt co-generation facility at ECI, which produces steam and electricity.
 - MES gains a major new client when the Maryland Department of Transportation's Aviation Administration (MAA) hires MES to take over National Pollution Discharge Elimination System (NPDES) permit monitoring and reporting under stormwater regulations at the Baltimore/Washington International Thurgood Marshall Airport (BWI).
-

1990



- Baltimore County contracts with MES to directly operate the BCRRF and the Western Acceptance Facility.
 - MES starts a used antifreeze collection program, collecting a total of nearly 300,000 gallons in nine years from 120 collection sites. The project is combined with the Used Oil program and renamed the Used Oil and Antifreeze Collection program.
 - MES manages the procurement, construction, and eventual operation of the Montgomery County Materials Recovery Facility (MRF). The facility opens in 1991. (Pictured)
 - MES hires George, Miles and Buhr, LLC, to develop a regional-based sludge management plan. The regional facilities will be sited at Freedom, Dorsey Run, and Maryland Correctional Institution - Hagerstown (MCI-H) wastewater treatment plants.
 - Freedom wastewater treatment plant is upgraded to include seasonal Biological Nutrient Removal technology and goes online.
 - MES begins operations for the Maryland Department of Juvenile Services at Meadow Mountain, Savage Mountain, and Backbone Mountain Boys Camps.
-

1991

- The Maryland General Assembly upgrades MES' ability to finance projects by passing legislation that allows the agency to control procurement of equipment, as well as construction engineering, and architectural services. The General Assembly also appropriates capital funding directly to MES for upgrades at State-owned water and wastewater treatment facilities.
- A Consent Decree is issued and executed between Maryland Department of Transportation Maryland Port Administration (MDOT MPA) and MDE to address the chromium contamination at Dundalk Marine Terminal. MES begins operation and maintenance tasks to assist in compliance with the Consent Order.

1992

- MDOT MPA hires MES to assist in locating environmentally sound sites for dredged material placement.
- Baltimore County hires MES to extinguish the stump dump fire in Granite (Baltimore County). The county received bids of \$7 to \$9M to put out the fire that fire fighters had fought for 18 months. MES completed the project for less than \$1M, capping the site and containing the fire.
- MES completes construction and begins operation of a reverse osmosis (RO) water treatment plant at Eastern Correctional Institution (ECI) in Somerset County. It is the first RO water plant in the State.

1993

- The Maryland General Assembly approves legislation to restructure MES, making it a self-supporting agency. The legislation separates MES from DNR, exempts MES from most state procurement regulations, and gives it the authority to set up an independent personnel system.
- In 1993, after federal agencies throw their support behind the Poplar Island Restoration Project, MES is given responsibility by MDOT MPA to provide coordination and facilitation services for the working group and coastal engineering and geotechnical quality assurance/quality control technical support for Phase One construction. In 1994, MES is contracted to provide planning and technical management services in support of the preliminary planning and design of the project, the largest of its type ever constructed in the United States.
- MES is hired by the City of Cambridge to operate the Cambridge Wastewater Treatment Plant, the largest wastewater treatment plant it has ever operated.
- With funding from the Used Tire Cleanup and Recycling Fund, MES begins a series of projects to clean up abandoned scrap tire disposal sites. It also conducts 13 demonstration projects ranging from tire playgrounds to tire reefs to landfill liners and covers, using four million passenger car tires.

1994



- MES begins an apprenticeship program to train water supply and wastewater treatment plant operators. The program provides hands-on training and required classroom instruction, which can lead to complete certification. The program is officially recognized by the Maryland Department of Labor and Licensing Regulation (now Department of Labor).
- Disposal of an estimated 451,450 tons of chromium ore processing residue and demolition materials from the Allied Signal Plant near Baltimore's Inner Harbor is completed. MES completes Resource Conservation & Recovery Act (RCRA) closure activities for Area 5 at Hawkins Point on May 20, 1994 and has since managed the closed landfill in post-closure care status for Honeywell. MES continues monitoring of emptied hazardous waste Cell 40 and the MDOT MPA, Area 2/3 and Allied Signal (now Honeywell) Area 5 used for previous disposal of chromium ore processing waste.
- MES begins monitoring and managing the deicing fluid collection system for BWI-Marshall Airport. (Pictured)
- MES starts and operates the water and wastewater treatment facilities at First Urban Fiber in Hagerstown, a state-of-the-art paper recycling facility.

1995



- MES is a key player in a multi-million-dollar cost-sharing agreement reached between AlliedSignal Inc., (later Honeywell) and the State of Maryland. Allied agrees to help pay for the MES-designed cleanup of chromium ore tailings at the Dundalk Marine Terminal.
- MES implements its independent personnel system.
- MES expands its yard waste program, providing a mobile tub grinder to counties and municipalities. (Pictured)
- MES designs, permits, finances, and constructs a regional yard waste composting facility in Howard County for Howard, Baltimore, and Anne Arundel Counties. At the insistence of the Rouse Company Foundation (RCF) Counties, MES hires Browning-Ferris Industries to operate the facility. The project opens in November 1995. Complaints of odors arise almost immediately. Neighbors launch a campaign to close the facility and a lawsuit is filed against MES. In the spring of 1996, MES assumes direct operations of the facility, but continued opposition convinces the RCF Counties to close the site as a composting facility later that year. Most of the site is eventually sold to a developer, and MES operates a yard waste transfer station there until 2011.

1995

- MES completes construction of upgrades to the MCI-H wastewater treatment plant in Hagerstown. The upgrades include addition of biological nutrient removal processes.
 - MES obtains a National Pollutant Discharge Elimination System (NPDES) permit and completes upgrades to the wastewater treatment facility at ECI in Somerset County. This allows the facility to disconnect from the Somerset County wastewater treatment plant and have its own discharge point. The facility is required to meet the most stringent limits in the State and is the Agency's first Enhanced Nutrient Removal wastewater treatment plant.
-

1996

- MES becomes a regional player in the solid waste management arena when Garnett (then Sanifill, then USA Waste, then Waste Management, Inc.,) hires MES to operate the Annapolis Junction transfer station where MES manages the tipping floor and then loads railcars with waste for transport to King George, Va., the site of a 4,000-ton-per-day mega landfill. MES ends its involvement in the project in 2001.
 - MES enters into a contract with AACPS to operate the Bodkin water treatment plant that supplies water to Bodkin Elementary School, Chesapeake Middle School, and Chesapeake High School.
-

1997

- MES becomes the first State agency to adopt performance-based compensation. The compensation system rewards employees for initiative and innovation, and requires a certain level of performance for continued employment.
 - At MDOT MPA's request, MES manages the construction of a new storm drain system as part of the initial site preparations to restore the old US Army Corps of Engineers (USACE) dredged material placement site at Cox Creek purchased by the MDOT MPA.
 - MES enters into an inter-governmental agreement with St. Mary's County to begin a program that includes inspection of stormwater structures and notification of maintenance deficiencies to property owners.
 - MES establishes a Service District and acquires the Darlington Water Company after the Company's owners and sole employees, Frank and Joan Garrett, decide to retire and cease operation of the water treatment and distribution system. The system was created in the early 1950's to supply parts of the Darlington community with potable water. After acquiring the system, MES applies to MDE for grant funding to install a new well, treatment system, storage tank, and new distribution piping.
-

1998

- The Lake Linganore Service District is created to finance and construct improvements to one of the community's dams. The man-made lake, which collects stormwater runoff, serves as a drinking water source for the City of Frederick and a backup drinking water source for Frederick County.
-

1999



- Prince George's County hires MES to operate the leachate pre-treatment facility at the Brown Station Landfill.
 - The Solid Waste Association of North America selects MES for two coveted Gold Awards, one for the planning and financial management of the Mid-Shore Landfill and the other for MES' closed loop recycling program. (Pictured)
 - MES begins operation of the water and wastewater facilities at the Conowingo Dam for Susquehanna Electric.
 - MES begins operation of the Town of Myersville's water and wastewater facilities. MES oversees upgrade of the wastewater treatment plant to a Sequencing Batch Reactor two years later.
 - MES is awarded the Outstanding Marketing Award by the National Recycling Coalition for its marketing program of recyclable commodities.
-

2001

- MES is approached by private venture capitalists seeking to partner with MES to develop a tire recycling and crumb rubber production facility. MES eventually determines to develop, equip, finance, and operate such a facility on its own. The tire recycling facility opens in Halethorpe in 2002, and a fertilizer bagging operation is later added. The project is a technical success, producing thousands of pounds of high-quality crumb rubber. MES eventually closes the facility when the costs of producing the material exceed revenues.

2001



- MES begins operation of the Paul S. Sarbanes Restoration Project at Poplar Island in Talbot County, MD, after previously assisting the MDOT MPA with planning, engineering, design, and construction activities. (Pictured)
- MES enters into an agreement with MDOT MPA to manage and implement the restoration of the Cox Creek Dredged Material Containment Facility to include construction of a stability berm, armor stone slope protection, two spillways, a wetland mitigation area, and raising of the dike system to +24 feet above sea level to provide necessary capacity for Harbor dredged material.
- After 9/11, Camp Fretterd is used as one of staging areas for the National Guard before they are sent to New York. After the well pump for the water treatment plant fails, MES staff installs a pipe and hose up the side of the water tower while truckloads of water are brought in to keep the tower full. Operators stay on site checking the pH and chlorine residuals on every load of water until the well pump is replaced.

2002



- The Town of La Plata is struck by a devastating tornado. Within hours of the tornado, MES personnel are at the scene of the town's damaged water and wastewater treatment facilities, making sure that water pressure is sufficient for emergency firefighting and available for household use. Also, within three business days of being asked by the county government, MES personnel have a working transfer station set up and loads and sends off thousands of tons of demolition debris and trash to a Virginia landfill, seven days a week, 12 hours a day. (Pictured)
- MES begins managing and monitoring the sanitary sewer system for BWI-Marshall Airport.
- MES begins providing an assessment of the oil/water separators at State Highway Administration (SHA) facilities. This leads to oil/water separator inspections, NPDES permit compliance, waste disposal services, and Illicit Discharge Detection and Elimination inspections for SHA.
- During a severe drought, the City of Frederick has 31 days before they run out of water. The City reaches out to MES for assistance in procuring and installing a temporary water system. In one month's time, MES completes installation of wells, piping, and a membrane treatment plant and is permitted to tie into the City's distribution system and deliver water to the residents. (Pictured)
- MES begins operations at the water treatment plant for the City of Frostburg.

2003

- MES is contracted for the construction of a groundwater treatment plant at the Dundalk Marine Terminal that has potentially come in contact with chrome ore processing residues.

2004



- MES is contracted by the DNR to assist with the development of an Environmental Impact Statement (EIS) to assess options for restoring oyster populations in the Chesapeake Bay including an assessment of the option of introducing nonnative species of oysters to the Bay. A Final Programmatic EIS was completed in 2009 which identified the preferred alternative as a combination of efforts to restore the native oysters in the Bay. MES continues to work with DNR under various contracts and assists with the implementation of native oyster restoration projects and the development of an expanded oyster aquaculture program. (Pictured)
- MES enters into an agreement with BFI to construct and operate a solid waste open top trailer transfer facility at the Western Acceptance Facility.
- MES begins managing and monitoring the potable water system at BWI-Marshall Airport.

2004



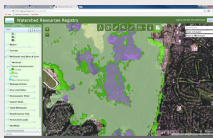
- MES first-uses GIS technologies at BWI-Marshall to enable efficient, mobile collection of field data for environmental compliance activities. MES then expands the use of GIS based software applications for numerous MDE programs, followed by the Maryland Department of Transportation's State Highway Administration (MDOT SHA). Agencies using geospatial services include Maryland Emergency Management Agency (MEMA), DNR, Maryland Department of Information Technology (DOIT), Baltimore County, and others by 2016.
- MES begins operations and maintenance of the Cox Creek DMCF in Anne Arundel County for MDOT MPA. The facility provides placement capacity for Harbor dredged material after the closure of the Hart Miller Island DMCF. (Pictured)
- At MDE's urging, the Town of Centreville hires MES to operate its troubled wastewater treatment plant. The facility had been upgraded to a Sequencing Batch Reactor system, but the facility was not in compliance and was in the news due to these deficiencies. MES Water/Wastewater staff brings the plant into compliance.

2005



- The newly formed Port Deposit Water and Sewer Authority hires MES to operate the Town's water and wastewater facilities. The Authority fails to generate sufficient funds to reimburse MES for all its costs, and MES terminates its activities there in 2008.
- MES begins operation of the Dundalk Marine Terminal Groundwater Treatment Plant.
- MES begins construction of the unloading pier and raising the dike system from +24 feet to +36 feet above sea level at the Cox Creek DMCF.
- MES utilizes a public-private partnership arrangement to design and build a new Headquarters facility located in Millersville MD. For the first time since its inception MES headquarters are located outside of Annapolis. (Pictured)
- MES partners with MDOT MPA and others to distribute diamondback terrapin hatchlings born on Poplar Island as part of a raise-and-release program, Terrapin Education & Research Program (TERP). Beginning in 2005 and each year since, over 150 hatchlings are cared for in classrooms across the State, where students monitor their hatchling's growth and collect data for scientific research before the turtles are re-released on the island. (Pictured)

2006



- MES purchases property on Tilghman Island in Talbot County to serve as the Poplar Island Landbase due to multiple landbase moves required in the first few years of operation. Sustainable methods are used to construct the building interior, landscaping, and new docking facilities.
- In 2006, MES begins work with several State and Federal partners such as SHA, DNR, MDE, EPA USACE, and many others to create the Watershed Resource Registry (WRR) for the State of MD. The WRR is an interactive online mapping tool that prioritizes areas for preservation and restoration of wetlands, riparian zones, terrestrial areas, and stormwater management control across an entire state. WRRs are now available in several mid-Atlantic states, including Delaware, Maryland, Pennsylvania, New Jersey, Virginia, and West Virginia, and is continuing to expand into other States. (Pictured)

2007



- MES begins construction of the 130-acre Masonville DMCF in Baltimore City for the MDOT MPA. The project includes an additional 58 acres of protected land in Masonville Cove which requires remediation under a consent order with MDE, along with design and construction of the Masonville Cove Environmental Education Center. The project starts with the preparatory dredging at the project site. (Pictured)
- MES enters into an Intergovernmental Agreement with the Howard County Public School System to operate wastewater treatment plants at Bushy Park Elementary School/Glenwood Middle School, Triadelphia Ridge Elementary School/Folly Quarter Middle School, Glenelg High School, Marriott's Ridge High School/Mount View Middle School, and Dayton Oaks Elementary School. The wastewater treatment plant at Glenelg High School also serves the residents in the newly-developed Musgrove Farms subdivision, located adjacent to the school.

2008



- MES assists MDOT MPA and the USACE in finalizing the Mid-Chesapeake Bay Island Ecosystem Restoration Integrated Feasibility Report & Environmental Impact Statement (EIS), USACE releases in September 2008. The purpose of the study is to determine the feasibility of protecting and restoring aquatic, intertidal wetland, and upland habitat for fish and wildlife at James and Barren Islands using dredged material from the federal Chesapeake Bay approach channels serving the Port of Baltimore and the Chesapeake and Delaware Canal. This project is anticipated to become the replacement project for the Paul S. Sarbanes Ecosystem Restoration Project.
- MES enters a Power Purchase Agreement with Constellation Energy to build, maintain, and provide solar electricity to the MES Headquarters building in Millersville. MES purchases the land from MDOT SHA for the 1,488 solar panels. The project consists of a 270-kW ground array, as well as 30-kW thin film roof installation. In 2015, MES amends the agreement to include a 7-canopy parking array capable of producing 148-kW hour of electricity including 2 electric vehicle charging stations available to employees at no cost. To date, these two systems provide approximately 35% of the energy needs of the building as a yearly average. (Pictured)

2009



- MES is granted authority by the General Assembly to assist in planning, designing, and constructing renewable energy projects, as well as the production, generation, or distribution of energy from a renewable or other energy source.
- MES begins operation and maintenance of the Masonville DMCF for MDOT MPA. Remediation, environmental restoration, and facility support are ongoing. In 2013, Masonville becomes the first Urban Wildlife Refuge, a designation given by the US Fish and Wildlife Service. (Pictured)
- MES begins administrating the Port of Baltimore (POB) Clean Diesel Program when it receives, on behalf of MDOT MPA, a \$3.5M cooperative agreement from the US EPA, Region 3, American Recovery & Reinvestment Act National Clean Diesel Funding Assistance Program for implementation of certified clean diesel technologies at the POB to reduce emissions from dray trucks, cargo handling equipment, locomotives, and tug boats.
- MES, on behalf of MDOT MPA and in conjunction with UMCES/Maryland Environmental Resource Center (MERC), produces a retrofitted barge to allow ballast water treatment systems to be evaluated in a natural setting at different locations in the Chesapeake Bay region, for the study of potential future water quality improvements by limiting the introduction of invasive species from foreign waters.

2008 -
2010



- MES plans, designs, permits, finances, and constructs the Midshore II Regional Landfill in Caroline County. The Project includes numerous permitting challenges, capping the Hobbs Road landfill, and transforming the Midshore I facility into a residential drop-off facility and transfer station for Talbot County. (Pictured)

2010



- MES on behalf of MDOT MPA, manages the planning, design, procurement, and dredging of the South Locust Point channel improvements. The project consists of dredging channel wideners on the east side of both the East and West Access Channels to South Locust Point Marine Terminal, which is necessary to accommodate additional cruise ship traffic calling on the terminal.
- MES begins collecting snowfall data for National Oceanic and Atmospheric Administration (NOAA) beginning in December 2010 after the “Snowpocalypse” of December 18-19, 2009 and “Snowmageddon” when back to back blizzards on February 5-6 drops 24.8” of snow in a two-day period. It is later determined that the snow was incorrectly measured from a roof top location, rather than the NOAA approved location on the ground, away from buildings, and without the use of proper measuring equipment provided from NOAA. MES is tasked by the MAA to take over the official snow readings for NOAA. (Pictured)

2010

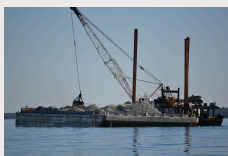
- In late 2010, MES enters into a contract with Constellation Energy to provide services for a large-scale ground-mounted solar installation at Mount St. Mary's University in Emmitsburg, Frederick County, as part of Maryland Energy Administration's (MEA) Generating Clean Horizons program. MES is part of the team working to obtain permits and approve plans related to erosion and sediment control, wetlands, stormwater management, sight distance analysis, earth and forest disturbance, forest stand delineation, and forest conservation. At the time, the solar panel installation at Mount St. Mary's University is the largest in the state and generates more than 22 million kilowatt hours of electricity per year, to power the University System of Maryland and other state facilities operated by the Department of General Services.

2011

- MES initiates operations at Midshore II Regional Landfill in Caroline County near Ridgley, including the operation of the Holly Road Homeowner Drop Off facility.

2012

- In 2012, MES begins providing support to SHA Office of Material Technology related to subsurface exploration, investigations, and inspection. Services include site reconnaissance, boring stakeout, oversight of boring installation, soil and water sampling (if needed), and site restoration. MES assists SHA on several high-profile projects including the 404 expansion and Route 32 expansion projects.
- In response to Hurricane Sandy, Herrington Manor State Park houses workers for the cleanup and power restoration throughout Garrett County. MES sets up generators at the Park to continue operations at the water and wastewater facilities so the bath houses can remain in use.
- MES enters into its 1st Controlling Authority agreement at the Riverdale Condominium Development in Anne Arundel County.



- MES is contracted by the MDOT MPA to begin the planning and design phases of Cox Creek Expanded DMCF.
- Under contract to DNR, MES assists in restoring oyster habitat in sanctuaries of Harris Creek and the Little Choptank River of the Bay through the procurement, transport, and placement of alternative substrate in reefs designed to simulate historic oyster habitat and optimize oyster survival rates. The substrate, consisting of fossil oyster shell purchased from a quarry in the Florida Panhandle and granite purchased in large quantities locally, provided a hard, elevated surface area for spat setting, thereby protecting the \$21M public investment in Maryland's spat hatcheries and budding aquaculture industry. Over the period of 2014/2015, MES and subcontractors procures, transports and places ~ 118,750 tons of fossil oyster shell and ~ 187,900 tons of granite on 38 reefs totaling 240 acres, making the project the largest oyster restoration effort of its kind at that time. The fossil shell is transported by rail car, transferred to barges in Curtis Bay, and then transported to the placement sites. The granite is also transported to the placement sites by barge. Overall, 22 trains and ~120 barges are used to move the material. (Pictured)

- MES responds to the Town of Vienna's request for emergency operation of the Town's water and wastewater systems after their operator quits. The Town also asks MES to perform repairs to their water & wastewater systems.
- MES forms the Operations Challenge Team, Motley Poo, which competes for the first time. They come in 1st place in the regional competition at the Tri-Association conference in Ocean City, which entitles them to represent the Chesapeake Water Environment Association at the Water Environment Federation's national competition in Chicago, where they finish in 8th place out of 30-plus teams in Division 2. (Pictured)
- MES provides the design coordination, equipment purchase, and construction for a new solid waste transfer station and single stream recycling processing facility for Baltimore County at their Central Acceptance Facility in Cockeysville. Total project cost is \$24 million, which is accomplished within budget and schedule.
- MES and Montgomery County are jointly awarded the Solid Waste Association of North America's Gold Excellence Award in Marketing for its marketing of Leafgro® Compost products.
- MES is awarded the Solid Waste Association of North America's (SWANA) Gold Excellence Award for Landfill Operation for operation of the Midshore System of Landfills.

2013



- MES is contracted to assist the MDOT MPA with technical and environmental tasks required to complete the Baltimore Harbor and Channels 50-foot project, General Reevaluation Report (GRR) to consider whether widening the existing project channels, according to the originally authorized plan still meets the needs of MDOT MPA, if it is still in the Federal interest, and to allow for the reformulation of the plan, if appropriate, to develop new alternatives.



- MES enters into an agreement with MDOT MPA to perform Seagirt Access Dredging Project as part of a \$10M Transportation Investment Generating Economic Recovery (TIGER) grant. The agreement ultimately was increased to \$34M to complete other elements of the grant package including the Fairfield Marine Terminal storm drain relocation and wetbasin filling and South Locust Point Fruit Pier Slip. (Pictured)
- MES enters into an intergovernmental agreement with Baltimore County which significantly expanded its stormwater service. Under the agreement, MES provides stormwater inspections and sampling for permit compliance, stormwater pond inspection, and maintenance. MES also provides stormwater structure inventory, mapping, updates, and maintenance support to the Counties geodatabase.
- MES begins a Stormwater Structure Inspection and Inventory program with SHA. The project consists of locating, mapping, and inspecting drainage infrastructure including storm drain systems, cross culverts, outfalls, stormwater management facilities, and associated drainage infrastructure that will result in the completion of a drainage assets geodatabase for the selected county. MES completes this work for eight counties on the eastern shore and two in Western MD.

- MES assumes oversight of the Glycol Recovery Vehicle (GRV) Operations & Maintenance project. Upon acceptance, MES acquires another key component of the deicing collection program. The project requires MES personnel to utilize the GRVs to collect waste glycol in areas/situations where the underground collection system could not, including performing all the associated vehicle inspection and maintenance necessary to keep the three existing GRVs in operation. (Pictured)



- MES enters into additional contracts with the AACPS to operate water treatment plants at Arlington Echo Outdoor Education Center, Fort Smallwood Elementary School, Lake Shore Elementary School, South Shore Elementary School, Deal Elementary School, Millersville Elementary School, Shadyside Elementary School, Southern Middle School, Lothian Elementary School, Edgewater Elementary School, and the Carrie Weedon Early Education Center.

- MES enters into an agreement with MDOT MPA to provide planning, design, permitting, demolition, construction, project management, mitigation, remediation, engineering, environmental inspection, oversight, and administrative and technical services for the expansion of the Cox Creek Dredged Material Containment Facility. The project consists of several elements including demolition of the Kennecott campus (former copper refinery) including 26 buildings, various substructures and utilities, and stockpiled materials at the Cox Creek Expanded (CCE) uplands, construction of a new MES Operations complex, and final design and construction of an expanded DMCF with dikes raised to El. +60 MLLW. During the demolition project, the MES contractor discovered significant previously unknown hazardous waste contamination of a portion of the campus, requiring extensive remediation and transport of impacted materials to hazardous waste disposal sites in Texas and Michigan. (Pictured)

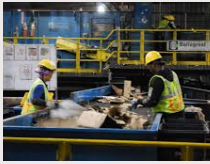


- MES, on behalf of MDOT MPA, manages the planning, design, procurement, and dredging for the Seagirt-Dundalk Marine Terminals New Work Dredging project, which widened and deepened the terminal access channels to allow for the new larger Post-Panamax vessels to access the MDOT MPA terminals. The approximately 1M cubic yards of material is placed into the Masonville DMCF.

2014

2015

2015



- MES enters into an operations agreement with Prince George's County to operate their Materials Recycling Facility (MRF) located in Capitol Heights after the County terminates its operations agreement with a private operator. MES shuts down the facility for one month to clean up and makes required operational repairs to achieve a safe acceptable level of operation. Facility is restarted after this initial rebuild and runs successfully. (Pictured)



- MES enters into an agreement with Harford County to operate the Harford County Waste Disposal Center in Street, MD. Additional work includes the County recycling program management, highway litter cleanup, as well as the mulch and composting operations.
- MES begins providing stormwater planning and design and construction compliance services to Prince George's County through the Clean Water Partnership (CWP). The CWP is the Nation's first Community Based Public-Private-Partnership that utilizes stormwater compliance as a focus for economic development within a community. (Pictured)



- On behalf of MDOT MPA, MES successfully coordinates all permitting requirements for the Poplar Island Expansion project. Construction of expansion begins in 2016, adding 575 acres of habitat and 28 million cubic yards of placement capacity to the original 1,140-acre footprint. (Pictured)

- MES contracts with Frederick County to perform an alternatives analysis, design, and permit a dredging project at the Lake Linganore. The man-made lake serves as a drinking water source for the City of Frederick, a backup drinking water source for Frederick County, and provides recreational opportunities for residents of the Lake Linganore community. Sedimentation led to a loss in water storage capacity needed by the City of Frederick's water supply system and has severely impacted recreational use of the upper part of the lake above Boyers Mill Bridge.

- MES takes the lead in drafting a three-way agreement with MDOT MPA and DNR to develop and implement public access and recreational use at the south cell area of Hart-Miller Island.



- After the first successful year of operating the GRV's, the MAA asks MES to implement a pilot Glycol Recycling Program.(Pictured)
- MES enters into a 5-year, \$5 million contract with Maryland Military Department to provide environmental services at State installations.



- Team Motley Poo wins the Regional Operations Challenge competition at the Tri-Association Conference in Ocean City and represents the Chesapeake Water Environment Association in WEF's national competition. They finish in 1st place in Division 2 out of more than 30 teams and move into Division 1 for future events. (Pictured)

- MES begins operations of a new, state-of-the-art membrane filtration water treatment plant at Rocky Gap State Park in Allegany County. The new facility, which has a larger treatment capacity than the old water treatment plant, will serve both the Park and the Casino.
- MES assumes responsibility for the ongoing operation of the Midshore Regional Recycling Program associated with the Midshore Counties. This operation includes responsibility for the collection of recyclables from 37 home-owner recycling drop-off centers within the Midshore Counties, as well as the marketing of the recovered commodities.

2016

- MES provides support to MDOT MPA for the planning, design, procurement, construction, and monitoring related to the first confined aquatic dredged material placement (CAD) pilot project which provides excavated 130,000 cy of usable construction material and provides placement capacity for 62,000 cy of maintenance dredged material.
- MES issues a request for information (RFI) to identify options to dredge and reuse sediment behind the Conowingo Dam. The RFI was then followed by two requests for proposals (RFP) in 2017 and 2018, which resulted in award of a contract for a sediment characterization study to further delineate the available sediment behind the dam (work initiated in 2020), and a pilot dredging project that includes innovative reuse studies for the dredged material (planned for 2021).

2016

- MES contracts with Garrett County to perform an investigation and produce an evaluation report to identify one or more Deep Creek Lake coves that would benefit from dredging to improve public use and recreational access. On behalf of the County, MES applied for a Waterways Improvement Fund grant from DNR to fund design and dredging of Arrowhead Cove. The County was awarded the grant in 2018 at a 50/50 match. MES moved forward with the design of the dredging project in 2019. In 2020, MES provided an alternatives analysis and performed soil sampling to determine material placement and reuse options. The 30% design and cost estimate is provided to the County to mechanically dredge approximately 15,000 cubic yards from this Cove.
- New Membrane Bioreactor (MBR) wastewater treatment plants go into service at Charlotte Hall and Southern Maryland Pre-Release Unit in Southern Maryland. These are the first MBRs installed at State facilities.

2017



- MES contracts with the Frederick County to perform the procurement, construction, and oversight of the Lake Linganore dredging project. In 2019, MES begins dredging the lake upstream of the Boyers Mill Road bridge ultimately removing up to 150,000 cubic yards and mechanically dewatering and trucking it to the County's Reichs Ford Road Landfill, where the dried material is stockpiled for later use as landfill cover material. The dredging project is slated to end spring 2021. This important project restores water storage volume lost due to sedimentation, allowing for continued recreational use of that part of the lake. (Pictured)
- MES, in coordination with MDOT MPA and MDE, assists in the creation of a MDE programmatic guidance document on sediment reuse in Maryland. MES' role is aimed at helping MDE develop the regulatory standards that would institute a means for reuse of dredged material and regulation of dredged material as soil or soil product.
- MES, on behalf of University of Maryland Center for Environmental Science (UMCES), completes the rehabilitation/expansion of an existing stone jetty adjacent to a boat basin at the UMCES Horn Point facility in Cambridge, MD.

2018

- MES, on behalf of MDOT MPA, provides procurement and construction management and oversight services for the installation of stormwater improvements at The Maryland Zoo in Baltimore. This project includes construction of a new bioretention pond to treat stormwater runoff from impervious surfaces, and construction of a stilling basin and step pool system to restore an eroded stream bed. MDOT MPA partnered with The Zoo to fund the improvements in exchange for mitigation credits.
- MES, on behalf of MDOT MPA, begins the contract to construct the Cox Creek Expanded (CCE) Borrow Area Excavation/Base Dike Widening. This contract consists of excavation of material from the CCE Uplands area (the former Kennecott Campus) and placement in the DMCF to widen the existing perimeter dikes to accommodate future dike raising efforts, thus providing additional capacity for harbor dredged material. MES also begins the contract to construct the new MES Operations complex at Cox Creek Expanded.
- MES, with a combination of grants from MDE and local/State funding, completes Enhanced Nutrient Removal upgrades at Freedom District and MCI-H wastewater treatment plants.
- MES, on behalf of MDOT MPA, completes the Dundalk East Federal Channel & Dundalk Marine Terminal Berths 7-10 & 11-13 Maintenance Dredging project, to re-establish the depth of the project areas and maintain access to the Dundalk Marine Terminal container berths.
- A twelve concrete bunker GORE cover compost installation is initiated at the Prince George's County Organic Compost Facility located at Western Branch. This \$6.1M system, in conjunction with the mobile GORE heap systems already in place at Western Branch, allows for the processing of 32,000 tons of food waste per year, generating a Leafgro Gold® compost product. This installation represents one of the largest food waste composting facilities in the US.

2018

- MES enters into its first Construction Manager At Risk (CMAR) pre-construction contract for expansion and improvements to the ECI wastewater treatment plant in Somerset County. The construction contract is awarded in 2019 and construction will be substantially complete by June 2021. When completed, this facility will be capable of meeting better-than ENR-level treatment parameters and will be operating under one of the most stringent NPDES permits issued by the State.
- As an emergency request, MES is contacted by Carroll County Department of Public Works to provide temporary supervision and oversight at their water treatment plant because of staff and compliance issues they discover. MES sends two senior staff to evaluate, supervise, and implement policy and procedures to put the facility back on track. Because of this effort, the County expands MES' scope to include permanent permit compliance and reporting services.
- MES is called to the Church Hill North Influent Pump Station to deal with heavy flow from excessive water infiltration coming into the station wet well and non-working pumps, which allows the flow to back up into the collection system. Pump trucks are brought in to help keep up with the incoming flow and a contractor is brought onsite to pull and inspect the pumps. The team's quick response prevents a disastrous situation.
- Construction is completed on a new Membrane Bio Reactor plant and MES starts up the new wastewater treatment plant at Rocky Gap State Park in Allegany County. The new facility, which has a larger capacity than the old facility, will serve both the Park and the Casino.



- MES, on behalf of MDOT MPA, supports the USACE pre-engineering and design phase for the Mid Bay Island Ecosystem Restoration project. Once permits are issued, construction activities are estimated to begin at Barren Island in 2022 and at James Island in 2024. The Mid-Bay Project will restore remote island habitat at both sites and protect submerged aquatic vegetation at Barren Island and accommodate an estimated 90-95 million cubic yards of dredged sediment, providing at least 30 years of capacity. (Pictured)
- MES restores an eroded shoreline with a planted living shoreline at Arlington Echo to help reduce future erosion and improve water quality. The completed project provides a beneficial teaching tool for AACPS and Total Maximum Daily Load credits for MDOT MPA. MES performs this work under an IGA with AAPCS with a portion of the project funding provided by MDOT MPA.

2019



- MES is contracted by Garrett County to operate and manage their water and wastewater program. This includes 27 treatment facilities throughout the county. MES works closely with the county's administrators, public utilities personnel, commissioners, and human resources team to assure a seamless transfer of operations. MES is projected to save the County in operational labor costs and vehicle expenses. (Pictured)
- A new demonstration project funded by MDOT working alongside MES, MDE, EPA, and private industry involving retrofitting stormwater management ponds with technology known as Continuous Monitoring and Adaptive Control (CMAC), at existing sites in three Walmart locations across the state and is inclusive of 20 years operation and maintenance costs. Under a procurement established by MES working in conjunction with MDOT, an RFP is issued requesting 100 Impervious Area Treatment (IAT) credits sourced from private land owners, which will be used to help support MDOT's Bay TMDL restoration requirements. According to MDOT the cost of purchasing these credits is a quarter of the cost of a typical stormwater restoration project, saving the Marylander tax payers millions of dollars while at the same time, ensuring compliance with state/federal environmental laws, permits, and regulations. (Pictured)

2020

- MES initiates a procurement to supply natural gas to UMES (Princess Anne) and the ECI Cogen facility (Westover). Chesapeake Utilities is selected and a ten (10) year supply contract with MES is executed. Project completion is scheduled for September 2021.
- MES enters into an agreement with the Maryland Department of Aging and begins operation of a Durable Medical Equipment collection, cleaning, rehabilitation, and recycling operation at the Department of Agriculture's Tobacco Warehouse in Cheltenham.
- MES, on behalf of MDOT MPA, completes the Cox Creek Expanded Kennecott Copper Refinery Campus Demolition contract.
- MES completes raising of the Masonville Dredged Material Containment Facility perimeter dike system to +18 feet above Mean Lower Low Water (MLLW) providing necessary additional capacity for Harbor dredged material.
- MES begins a partnership with Prince George's County to provide contract management services. Under this agreement, MES assumes the management of all engineering project and compliance-related work for the County's Department of Environment, Resources Recovery Division. The largest of these projects is the Brown's Station Road Area C infill project. This critical project includes engineering and construction-related activities, and once finished, will provide over 100 years of landfill capacity for the County. In Fiscal Year 2021, the value of this work is \$11.4M.
- Garrett County further expands MES services on their 27 Water and Wastewater Plants to include all required permit and regulatory compliance tracking and reporting, including Biosolids permitting and related required MDE reporting.
- MES starts up a new water treatment, storage, and distribution system at Fair Hill Natural Resources Management Area. This new system, constructed in conjunction with a major upgrade to the racetrack at the site, will provide the water supply needed for the facility to host major equestrian events, such as Olympic Trials.
- By the end of 2020, MES Water and Wastewater Operations Division provides services to over 270 water and wastewater treatment and conveyance facilities.

2021



- MES successfully completes dredging of approximately 150,000 cubic yards of sediment from Lake Linganore, a 209-acre lake located in central Frederick County.
- MES provides support for the expansion of the Paul S. Sarbanes Ecosystem Restoration Project at Poplar Island. The completed lateral expansion provides an additional 575 acres to Poplar Island for a project total of 1,715 acres.
- Upgrades are completed to the Prince George's County MRF increasing the recovery of recyclable plastics and improving marketability.
- Eastern Correctional Institution's wastewater treatment plant (WWTP) is updated to expand the WWTP from 0.48 million gallons per day to 0.9 million gallons per day -- nearly double the capacity -- and with one of the most restrictive National Pollutant Discharge Elimination System permits in the State. Also included in the upgrade -- a new administrative and laboratory building, office, control and maintenance buildings, and integration of a new supervisory control and data acquisition system. (Pictured)
- In the fall of 2021, MES successfully completes the dredging portion of the Conowingo Sediment Characterization and Innovative Reuse and Beneficial Use Pilot Project, which required dredging up to 1,000 cubic yards of sediment from the Susquehanna River upstream of the Conowingo Dam. The sediment sampling and analysis was completed in fall/winter of 2020 which resulted in a Final Sediment Characterization Report in the summer of 2021. (Pictured)
- In response to the 2021 Senate Bill 227, MES creates a database hub to facilitate public sharing of data and information to better understand flooding within Maryland and build future storm resiliency.
- MES solicits firms to install solar panels on rooftops at five parks throughout the State following a solar study.
- MES helps long-time partner, Montgomery County kick off its Commercial Food Scraps Recycling Partnership Program.

2021

- Governor Hogan signs the MES Reform Act of 2021 – Senate Bill 2 (Chapter 72, Acts of 2021) was signed into law on April 13, 2021. The act makes overarching changes to the governance and administration of MES. This includes, but was not limited to: (1) reconstituting the MES Board of Directors (“Board”); (2) altering the composition, selection, and standards of conduct for the Board; (3) adding new spending and contracting restrictions; (4) requiring an independent assessment of the Board; (5) requiring the Executive Director to appoint a diversity officer; (6) requiring the Board and executive management to undergo annual training requirements; (7) requiring the Board to adopt or readopt certain MES policies; (8) establishing new requirements and standards for holding board meetings; and (9) requiring the Executive Director to report expenses at each regular Board meeting. The bill took effect on July 1, 2021.
-

2022



- MES is ordered into Back River WWTP by the MDE to resolve urgent problems keeping the plant from meeting discharge permit requirements. As a result of the team’s diligent work, the effluent at Back River WWTP was meeting all National Pollutant Discharge Elimination System permit parameters within four months. (Pictured)
 - MES Environmental Operations initiates solid waste permitting for Midshore III Regional Solid Waste Facility in Queen Anne’s County, Centreville, MD.
-



- MES completes construction of the Masonville Dredged Material Containment Facility Base Dike Widening project, using all in-house labor, placing over 300,000 cubic yards of fill material along the interior of the dike, removing the two existing spillway weir structures, and placing of 125,000 square yards of high strength geotextile material.
- In August of 2023, MES completes the final portions of the Conowingo Pilot Project, with the successful innovative reuse of the dredged Conowingo sediments that includes a topsoil blend of 90% Conowingo dredged sediments and 10% composted leaf mulch used as topdressing at a sod farm in Northern Maryland. (Pictured)
- MDOT MPA purchases the former Tronox Hawkins Point facility and MES begins assisting with the operations and development of the now named Cox Creek Sediment Technology and Reuse (STAR) Facility. The site will be developed to become the future hub of processing dredged material from the Cox Creek DMCF for innovative and beneficial reuse.

2023



- MES completes the Cox Creek Expansion and Dike Raising to +60 during the Summer of 2023 on behalf of our client, MPA. The upland dikes are raised to an elevation of +60, for a total of 1.5M linear cubic yards of material placed for the entire project. (Pictured)
- MES archaeologists support excavation work at the Harriet Tubman birthplace site (Ross House) near Cambridge on the Eastern Shore. The team identifies the house foundation and many historically significant artifacts at the site, including bowls, plates, cooking wares, as well as glass medicine bottles, clothing buttons, and clay pipe stems.
- MES and its clients were awarded SWANA’s Sustainable Materials Management Organization Award. This award is given to one organization each year advancing the sustainable use of materials throughout their lifecycle to minimize waste and environmental impacts.
- MES begins construction work to convert boilers to natural gas at the Eastern Correctional Institution.

2023



- Maryland Used Oil Recovery Program surpasses the 20-million-gallon threshold. (Pictured)
- Logan Milby, from Midshore Operations, is crowned champion at the SWANA International ROAD-E-O competition for articulated loader. MES will be hosting the Mid-Atlantic Chapter Regional Road-E-O in 2024. (Pictured)
- MES kicks off Baltimore County pilot project for food waste composting at Eastern Sanitary Landfill.
- MES completes work at Back River WWTP. The plant now meets all permits with the effluent quality significantly increased.
- MDE requests MES assistance because the drinking water in the Town of Lonaconing is not safe to drink. MES assists Lonaconing in making a connection to a safe source of drinking water (Frostburg). After two weeks of extensive work flushing the lines and conducting sampling, a safe and sustainable supply of drinking water is restored to the town.

2024



- In FY24, EO successfully negotiated a 12-year contract extension to the existing Midshore II landfill. This agreement will allow the landfill to operate for 12 years beyond the original 80-year agreement and fully utilize the existing capacity at Midshore II.
- The Port of Baltimore Terrapin Education and Research Partnership (TERP) celebrated its 20th year in 2024. Through this program, juvenile turtles from Poplar Island live in MD classrooms for a school year while students collect data and learn about the species. As of 2024, nearly 3,300 terrapins have been head-started by students in schools around the state.
- TES played a significant role in managing and coordinating the statewide Maryland Mesonet project. Working with the Maryland Department of Emergency Management and the University of Maryland College Park, TES supported work to break ground and erect 18 towers spread out across the state.
- In 2024, MES completed the Deep Creek Lake Arrowhead Cove Dredging Project on behalf of Garrett County. Dredging removed approximately 11,000 CY of sediment, which was dewatered and transported to the Garrett County landfill for use as landfill cover. Site restoration occurred in spring 2024.
- W/WW started a new group comprised of engineers and operators to look into technology in the industry and to assist universities on proposal development and scaled pilots. In FY24, the team partnered with Johns Hopkins University, George Washington University, and South Dakota School of Mines and Technology, and investigated opportunities for floating solar panels and reverse osmosis reject.

2025



- In April 2025, on behalf of MPA, MES awarded a \$17M contract for the Colgate Creek Dredging and Innovative Reuse Project, including dredging 162,000 cubic yards of sediment to allow better access to Dundalk Marine Terminal. The material was taken to Cox Creek DMCF, where it was pumped into geotubes, dewatered, and stockpiled for future innovative and/or beneficial use projects.
- EO completed work retrofitting the boilers at ECI to combust natural gas. The group also installed an underground service distribution pipeline to deliver utility-grade natural gas to ECI buildings and replace propane-fired equipment with natural gas-fired equipment.



- During FY25, TES environmental review staff assisted in the development and review of the Chesapeake Bay Crossing Tier 2 (CBCT2) Study, which will culminate in the release of a draft Environmental Impact Statement in fall 2025. TES staff also spearheaded the cultural resource studies and assisted with public outreach.
 - The EO group assisted Prince George’s County with the procurement, installation, and operation of a food scrap depacking system that allows the county to accept packaged food scraps that would otherwise be landfilled.
 - W/WW completed a retrofit of the Rocky Gap polymeric membranes with new ceramic membranes. This project required substantial system modifications to accommodate the new membrane technology. Despite these challenges, the team completed the retrofit in time for the busy season at the park and casino.
 - As a part of the significant (41%) growth the Maryland Aviation Administration Recycling Assistance Task has seen since starting in July 2024, MAA requested that MES facilitate a \$880,000 contract for the airport’s compactors over five years.
 - W/WW completed the upgrade of the sludge dewatering system at the Eastern Correctional Institution. The two new belt filter presses are now online and produce a sludge cake with 23% solids content.
-



WWW.MENV.COM